
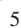


# Evolution of green lacewings (Neuroptera: Chrysopidae): an anchored phylogenomics approach

SHAUN L. WINTERTON<sup>1</sup>, JESSICA P. GILLUNG<sup>2</sup>, IVONNE J. GARZÓN-ORDUÑA<sup>3</sup>, DAVIDE BADANO<sup>4</sup>, LAURA C.V. BREITKREUZ<sup>5</sup>, PETER DUELLI<sup>6</sup>, MICHAEL S. ENGEL<sup>5</sup>, XINGYUE LIU<sup>7</sup>, RENATO J.P. MACHADO<sup>8</sup>, MERVYN MANSELL<sup>9</sup>, ATSUSHI MOCHIZUKI<sup>10,\*</sup>, NORMAN D. PENNY<sup>11,\*</sup>, CATHERINE A. TAUBER<sup>2,12</sup> and JOHN D. OSWALD<sup>13</sup>

<sup>1</sup>California State Collection of Arthropods, Sacramento, CA, U.S.A., <sup>2</sup>Department of Entomology and Nematology, University of California, Davis, CA, U.S.A., <sup>3</sup>Colección Nacional de Insectos (CNIN), Instituto de Biología, Universidad Nacional Autónoma de México (UNAM), México City, Mexico, <sup>4</sup>Dipartimento di Scienze della Terra, dell'Ambiente e della Vita, Università degli Studi di Genova, Genova, Italy, <sup>5</sup>Department of Ecology & Evolutionary Biology, University of Kansas, Lawrence, MA, U.S.A., <sup>6</sup>Swiss Federal Research Institute WSL, Birmensdorf, Switzerland, <sup>7</sup>Department of Entomology, China Agricultural University, Beijing, China, <sup>8</sup>Setor de Ciências Biológicas, Departamento de Zoologia Universidade Federal do Paraná (UFPR), Curitiba, Brazil, <sup>9</sup>Department of Zoology & Entomology, University of Pretoria, Hatfield, South Africa, <sup>10</sup>National Institute for Agro-Environmental Sciences, Tsukuba City, Japan, <sup>11</sup>California Academy of Science, San Francisco, CA, U.S.A., <sup>12</sup>Department of Entomology, Cornell University, Ithaca, NY, U.S.A. and <sup>13</sup>Department of Entomology, Texas A&M University, College Station, TX, U.S.A.

**Abstract.** A phylogeny of green lacewings (Neuroptera: Chrysopidae) using anchored hybrid enrichment data is presented. Using this phylogenomic approach, we analysed 137 kb of sequence data (with < 10% missing) for 82 species in 50 genera of Chrysopidae under Bayesian and maximum likelihood criteria. We recovered a strongly supported tree topologically congruent with recently published phylogenies, especially relationships amongst higher-level groups. The subfamily Nothochrysinæ was recovered as paraphyletic, with one clade sister to the rest of Chrysopidae, and the second clade containing the nominal genus (*Nothochrysa* Navás) as sister to the subfamily Apochrysinæ. Chrysopinæ was recovered as a monophyletic with the monobasic Nothancylini **tribe n.** sister to the rest of the subfamily. Leucochrysinini was recovered sister to Belonopterygini, and Chrysopini was rendered paraphyletic with respect to Ankylopterygini. Divergence times and diversification estimates indicate a major shift in rate in ancestral Chrysopini at the end of the Cretaceous, and the extensive radiation of Chrysopinæ, the numerically dominant clade of green lacewings, began in the Mid-Paleogene (*c.* 45 Ma).

## Introduction

Green lacewing (Neuroptera: Chrysopidae) adults are delicate insects generally typified by green bodies and broad, transparent wings with intricately laced venation. With few exceptions, chrysopid larvae are generalist arboreal predators with a

campodeiform body shape. The thorax and abdomen of many species possess elongate lateral processes and long setae used to entangle a packet of debris, usually containing plant fragments, insect wax, carcasses or dirt (reviewed by Tauber *et al.*, 2014). This debris packet is used in both camouflage and as a physical defence against predation and parasitism, and appears to be an archaic feature of the broader Chrysopoidea, with the behaviour well developed in Mesozoic fossil examples (Pérez-de la Fuente *et al.*, 2012; Tauber *et al.*, 2014; Wang *et al.*, 2016). With at least 1416 species grouped in 82 genera (Oswald, 2018), Chrysopidae are the second most species-rich

Correspondence: Shaun L. Winterton, California State Collection of Arthropods, 3294 Meadowview Road, Sacramento, CA 95832, U.S.A. E-mail: wintertonshaun@gmail.com

\*Deceased.

family of Neuroptera. They are divided into three extant subfamilies – Apochrysinæ, Nothochrysinæ, Chrysopinæ – and the extinct subfamily Limaiinæ. Mesochrysoptidae are sometimes included as a subfamily of Chrysopidae (Engel *et al.*, 2018) or treated as a separate family (Nel *et al.*, 2005; Liu *et al.*, 2016, 2018). Amongst the living subfamilies, Apochrysinæ and Nothochrysinæ are relatively species-poor, with *c.* 26 species (five genera) and 20 species (nine genera), respectively. Coincidentally, Apochrysinæ are almost pan-tropical, and Nothochrysinæ are almost pan-temperate in their distributions, with little overlap. Chrysopinæ comprise the overwhelming majority of the species diversity of the family with over 1350 species in *c.* 68 genera distributed in all major biogeographical regions. The subfamily is further divided into four tribes: Leucochrysinini, Belonopterygini, Ankylopterygini and Chrysopini (Brooks & Barnard, 1990).

Phylogenetic relationships within Chrysopidae have been the subject of various studies based on morphological (Brooks & Barnard, 1990; Brooks, 1997; Winterton & Brooks, 2002; Nel *et al.*, 2005) and molecular data (Winterton & Freitas, 2006; Haruyama *et al.*, 2008; Duelli *et al.*, 2014, 2017; Dai *et al.*, 2017; Garzón-Orduña *et al.*, 2019). These studies have ranged widely in the extent of taxon sampling, and the type and amount of data used. The recent supermatrix approach by Garzón-Orduña *et al.* (2019), which incorporated data from most previous molecular studies as well as numerous additional sequences, has probably come the closest to providing a statistically robust phylogeny of the family with broad taxon sampling. They recovered Leucochrysinini and Belonopterygini as sister groups, and Chrysopini was rendered paraphyletic by Ankylopterygini. Yet questions remain regarding specific clades in the green lacewing phylogeny that could not be addressed confidently by Garzón-Orduña *et al.* (2019). These include elucidating reciprocal monophyly of both Apochrysinæ and Nothochrysinæ, relationships amongst the more derived genera within the tribe Chrysopini, and the seemingly perennial issue of identifying the sister group to the rest of the family.

Recent studies have begun resolving higher-level relationships within Neuroptera using large amounts of DNA sequence data, resulting in progress in understanding evolution of the order at all levels (e.g. Winterton *et al.*, 2010, 2017; Liu *et al.*, 2015; Shi *et al.*, 2015; Garzón-Orduña *et al.*, 2016, 2017; Wang *et al.*, 2017; Bakkes *et al.*, 2018; Machado *et al.*, 2019). Here, we present the first large-scale genomic approach to understanding green lacewing phylogeny, in this instance using anchored hybrid enrichment data sequenced for 82 species, representing 50 genera of chrysopids. Based on the topology recovered from these genomic data, we estimate the timing of cladogenesis and diversification rates of major green lacewing lineages on a geological timescale and compare them with previous estimates. In addition, the enigmatic and monotypic Australian genus *Nothancyla* Navás was placed by Garzón-Orduña *et al.* (2019) as sister to the rest of Chrysopinæ, supporting similar results by Dai *et al.* (2017) and Jiang *et al.* (2017) based on mitogenomic sequence data. This genus had been historically difficult to place to subfamily as it exhibits morphological characteristics of both Chrysopinæ and Apochrysinæ (Brooks & Barnard,

1990; Winterton, 1995; Winterton & Brooks, 2002; Winterton & Freitas, 2006). Recent results suggest that *Nothancyla* may merit recognition as an additional tribe within Chrysopinæ; we include *Nothancyla* in this analysis to confirm its position and classification in Chrysopidae.

## Materials and methods

### Taxon sampling

Taxa were selected to represent the relative diversity within individual subfamilies and tribes for Chrysopidae. We sampled 82 species of Chrysopidae in 50 genera, representing all subfamilies and tribes (Brooks, 1997). Where possible and appropriate, multiple representatives of a clade were sampled (especially for species-rich genera) to ensure close to proportional sampling, an important assumption for Bayesian analyses. We were able to sample four genera of Nothochrysinæ but only a single genus of Apochrysinæ; as with previous studies, representatives of the latter subfamily are exceedingly rare and other genera were not available for sequencing. The bulk of sampling was from Chrysopinæ (45 genera), representing 67% of total genera in that subfamily. We also included multiple rare and/or enigmatic taxa where the higher-level placement has previously been considered to be contentious (e.g. *Nothancyla*, *Vieira* Navás, *Retipenna* Brooks, *Kostka* Navás, *Gonzaga* Navás). Outgroups were selected from a wide variety of other lacewing families, including Ithonidae, Nymphidae, Psychopsidae, Mantispidae, Berothidae, Rhachiberothidae and Hemerobiidae. Hemerobiidae has long been considered the sister family to Chrysopidae, based primarily on the morphological similarity of their larval stages (including a trumpet-shaped empodium in at least the first instar). This phylogenetic association has been recovered in some quantitative studies using both morphology and DNA sequence data (Winterton *et al.*, 2010, 2018; Garzón-Orduña *et al.*, 2016; Wang *et al.*, 2017), while other published studies using a variety of data sources have also recovered Hemerobiidae in other locations within Neuroptera, and not sister to Chrysopidae (e.g. Winterton, 2003; Yang *et al.*, 2012). The large phylogenomic study by Winterton *et al.* (2018) recovered Hemerobiidae as distantly related to Chrysopidae with strong statistical support. To further test the phylogenetic association between Hemerobiidae and Chrysopidae, we sampled 11 brown lacewing genera representing all major lineages of Hemerobiidae.

### DNA extraction

Genomic material was extracted from thoracic or leg muscle. We used either the DNeasy™ or Genra Puregene Tissue kits (Qiagen, Redwood City, CA, U.S.A.) for DNA extraction. Minor modifications included: (i) adding 20 µL RNase/20 mg tissue after the samples were lysed to remove RNA; and (ii) heating the elution buffer to 55°C before the elution step. We performed two separate elutions for samples with 30 and 50 µL each

time. A final step of drying the DNA pellet was done in some instances. After the extraction, the resulting DNA concentration and quality of each sample were quantified using a Denovix nanodrop spectrophotometer (Wilmington, DE, U.S.A.). Samples suitable for library preparation were also confirmed by running an electrophoresis on a 2% agarose gel.

#### Sample preparation and probe design

Specimens were initially preserved in 95–100% ethanol and stored at  $-80^{\circ}\text{C}$ . Vouchers are deposited in the California State Collection of Arthropods. The extracted DNA was used to produce Illumina libraries following Lemmon *et al.* (2012) and Prum *et al.* (2015), with procedures described in detail in Winterton *et al.* (2018). All DNA sequences generated as part of this study are deposited in the NCBI (Sequence Read Archive) depository (Table S1), under BioProject PRJNA398561. Probes were designed following the methods described in Winterton *et al.* (2018). In summary, probes were produced based on published transcriptomes or newly sequenced genomes of ten representative species of different families of Neuropterida. All probes and Illumina libraries were prepared at the Center for Anchored Phylogenomics (<http://www.anchoredphylogeny.com>) from extracted DNA and indexed following Lemmon *et al.* (2012) and Prum *et al.* (2015). Probes were tiled uniformly at 5 $\times$  density (new probe began every 25 bp) across each of the ten Neuroptera reference sequences for each locus, producing 50 239 probes in total. The total target size covered by probes was 233 234 bp.

#### Read assembly

Reads were prepared and assembled following the methods described in Winterton *et al.* (2018). Quality filtering was performed using the CASAVA high-chastity filter. Reads were assembled using the divergent reference assembly approach (quasi-de-novo assembly) described in Prum *et al.* (2015), which recovers the probe region and flanks for each sample. References used for the assembly included *Nymphes myrmeleonoides* Leach (Nymphidae), *Thaumatomylus delicatus* Banks (Osmylidae), *Palpares obsoletus* Gerstaecker (Myrmeleontidae) and *Nothancyla verreauxi* Navás (Chrysopidae).

#### Orthology determination and alignment generation

Putative orthologues were identified for each locus following Prum *et al.* (2015), which uses a neighbour joining-based clustering algorithm based on alignment-free pairwise sequence divergences. Clusters formed through this process were then screened for taxon presence. Assembled contigs derived from fewer than 17 reads were removed. Clusters containing < 50% of the species in the taxon set were removed; 70% conservation was required for each site to be considered reliable and 20-bp

regions containing matches at fewer than ten reliable sites were masked. After masking, sites containing < 73% unambiguous bases were removed from the alignment. Sequences in each remaining cluster were then aligned using MAFFT v.7.023b (Katoh & Standley, 2013) with  $-\text{genafpair}$  and  $-\text{maxiterate}$  1000 flags utilized. Each alignment was again trimmed and masked following Prum *et al.* (2015), with 70% conservation required for each site to be considered reliable and 20-bp regions containing matches at fewer than seven reliable sites masked. After masking, sites containing < 67% unambiguous bases were removed from the alignment. The final nucleotide alignment contained 372 genes, with a total length of 137 028 bp. Basic alignment statistics, including percentage of missing data, were obtained using AMAS (Borowiec, 2016).

#### Phylogenetic analyses

Model selection remains a very important step in phylogenomic analysis (Gillung *et al.*, 2018). The best-fitting partitioning scheme and substitution model for each partition were identified using the *rcluster* search algorithm (Lanfear *et al.*, 2014) as implemented in PARTITIONFINDER 2 (Lanfear *et al.*, 2016); the best substitution model for each partition was selected using the Bayesian information criterion (BIC). The best-fitting substitution model across all partitions for the nucleotide dataset was a general time-reversible substitution model with rate heterogeneity described by a gamma distribution discretized into four bins (+G). The final alignment and partition file are presented in Supporting Information, Files S1 and S2, respectively. We estimated the phylogeny using Bayesian inference (BI) in EXABAYES v.1.4 (Aberer *et al.*, 2014). We performed two independent runs with four coupled Markov chain Monte Carlo (MCMC) chains each, sampling every 1000 generations and applying uniform priors to tree topologies and an exponential prior to branch lengths. After 50 million generations, we assessed convergence by computing the average standard deviation of split frequencies (ASDSF) and checking the estimated sample sizes (ESS) in TRACER v.1.6 (Rambaut *et al.*, 2014). We ran the chains until we obtained an ASDSF value < 1% and ESS values > 200 for all parameters. Finally, we used the *consense* tool of the EXABAYES package to obtain a 50% majority-rule consensus tree, discarding the first 25% of the sample topologies as burn-in.

#### Divergence times

Estimation of divergence times was implemented in BEAST v.2.4.6 (Bouckaert *et al.*, 2014). We defined the partitions and site models in BEAUTI based on the partition scheme and models proposed by PARTITIONFINDER (see Phylogenetic analyses section earlier), with model selection based on the BIC. We used an uncorrelated relaxed molecular clock model (Drummond *et al.*, 2006) with a log-normal prior, with topology and clock model linked across partitions. We applied a node dating approach with a birth-death tree prior; we defined these calibrating nodes by determining monophyletic taxon sets at

the nodes where calibrations were used. We used 16 fossils as calibration points (Table 1; Fig. S1). A prior calibration density was defined at each calibration node to account for both uncertainty underlying the age of the fossil and the possibility that the true divergence occurred earlier than defined by the fossil (Drummond & Bouckaert, 2015). We assigned a log-normal distribution for the calibration density at each calibration node. We ran two independent analyses in BEAST for 100 million generations each. We then evaluated the convergence and mixing of the MCMC chains in TRACER v.1.6, ensuring that the two runs converged on the same distribution and ascertained that the ESS were > 200. We then resampled the resulting files of the inferred phylogenetic trees with a frequency of 100 000 in LOGCOMBINER v.2.3.1 (BEAST package) and a burn-in of 30%. This resulted in 93 075 subsampled trees. We then summarized the subsampled trees in a maximum clade credibility tree with common ancestor heights as node heights using TREEANNOTATOR v.2.3.1 (BEAST package).

#### Diversification rates estimation

We used BAMM to assess diversification rate shifts across the Neuroptera phylogeny (Rabosky, 2014). We used the maximum clade credibility phylogeny from the BEAST analysis as input, with sampling probabilities estimated using the extant species diversity according to the online database Neuroptera Species of the World (Oswald, 2018). The sampling proportions were set as follows: Hemeroibiidae, 0.02; Rhachiberothinae, 0.08; Berothinae, 0.01; Mantispidae, 0.01; Psychopsidae, 0.04; Nymphidae, 0.06; Ithonidae, 0.13; Nothochrysininae (Chrysopidae), 0.13; *Nothochrysa* McLachlan, 0.12; Apochrysininae, 0.05; *Nothancyla* Navás, 1; Leucochrysinini, 0.01; Belonopterygini, 0.05; Chrysopini1 (*Chrysopidia* Navás + *Nineta* Navás), 0.034; Ankylopterygini, 0.05; Chrysopini2, 0.02. We used the 'set-BAMMpriors' function in the R package BAMMTOOLS (Rabosky *et al.*, 2014) to create the priors used for the analysis. We ran the

MCMC for 20 million generations, sampling every 1000 generations, checked the convergence and plotted the analysis results using BAMMTOOLS and CODA (Plummer *et al.*, 2006).

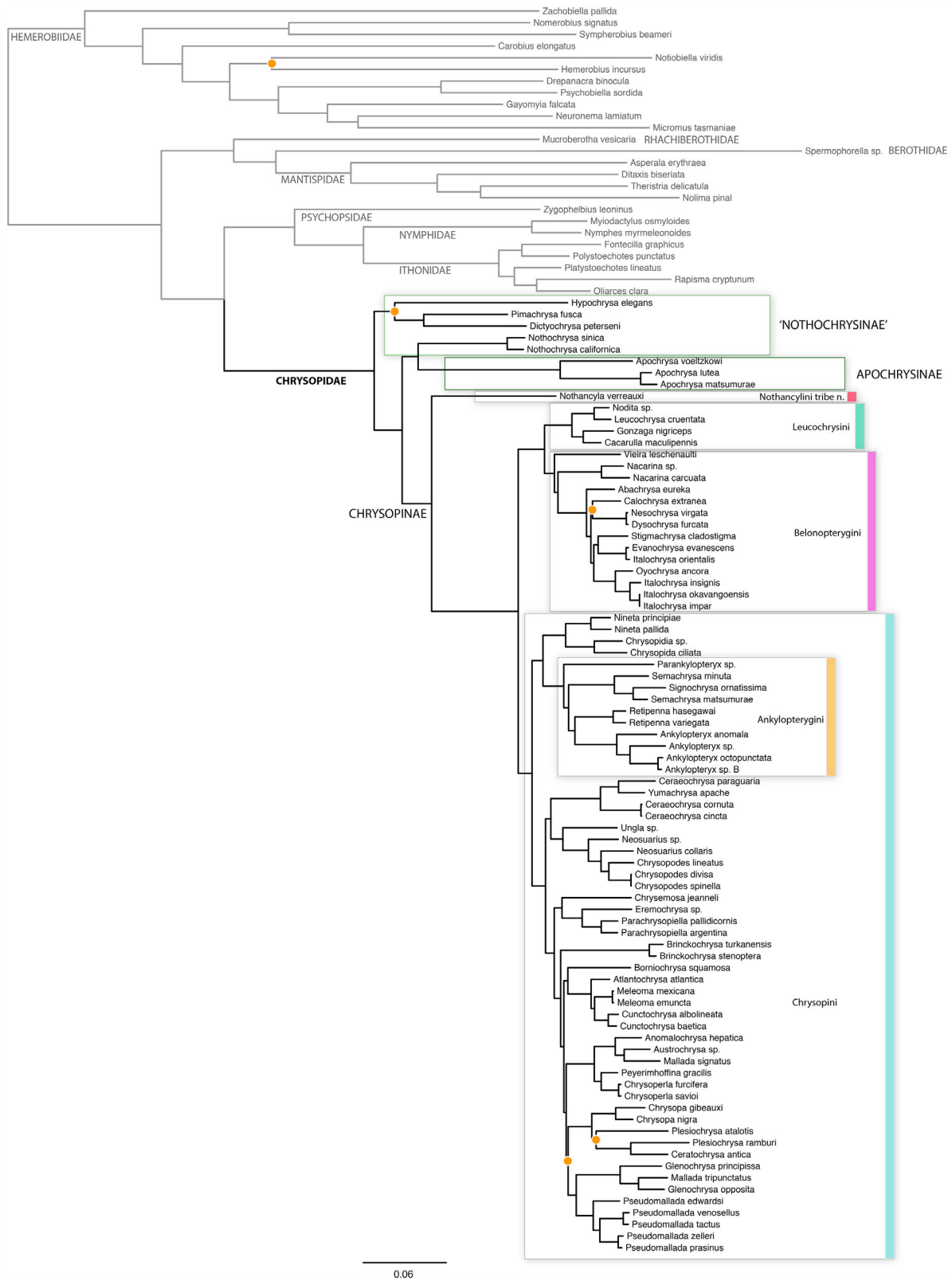
## Results

The nucleotide alignment of 107 taxa (25 outgroup, 82 ingroup) comprised a total of 137 028 bp after trimming, representing 372 loci. The complete nucleotide alignment had 9.5% of missing data and an average locus length of 368 bp. In all analyses, the tree topology (Fig. 1) was very strongly supported throughout and largely congruent among astral (Fig. S3), maximum likelihood (ML) and BI results, except in a few near terminal nodes in Chrysopini. In the BI tree all but five nodes had posterior probabilities of 1.0. In the ML tree (Fig. S2), overall support for nodes was slightly lower, with the same five nodes having lower than 80% bootstrap support. Statistical support for all nodes was high, even when branch lengths were relatively short (e.g. derived clades of Chrysopini).

Hemeroibiidae were not recovered as sister to Chrysopidae and were instead placed as the furthest outgroup (regardless of placement of tree root). A clade comprising the extant families Myrmeleontoidea (i.e. Psychopsidae, Myrmeleontidae, Ascalaphidae, Nemopteridae, Nymphidae and Ithonidae) (sensu Winterton *et al.*, 2018) were instead recovered as the sister group to Chrysopidae. Chrysopidae were recovered as monophyletic, originating in the Late Triassic, with one lineage of a paraphyletic Nothochrysininae as sister to the rest of the family. This clade, comprising *Hypochrysa* Hagen, *Pimachrysa* Adams and *Dictyochrysa* Esben-Petersen, was recovered separate to *Nothochrysa* McLachlan, which itself was placed as sister to Apochrysininae in a clade sister to Chrysopinae. Chrysopinae was recovered as a strongly supported monophylum diverging from Apochrysininae and Nothochrysininae during the Early Cretaceous (102 Ma) (Figs 2, S1; Table S2). Chrysopinae was then divided subsequently into three main lineages. *Nothancyla* was

**Table 1.** Fossil calibrations used in the divergence times estimation analysis. Nodes are numbered according to Fig. S1.

Node	Fossil species	Placement	Age (Ma)	Reference
2	<i>Cretomerobius disjunctus</i> Ponomarenko	Crown Hemeroibiidae	112	Nel <i>et al.</i> (2005)
5	<i>Notiobiella thaumasta</i> Oswald	Crown <i>Notiobiella</i>	14	Oswald (1999)
7	<i>Symphorobius completus</i> Makarkin & Wedmann	Crown <i>Symphorobius</i>	14	Makarkin & Wedmann (2009)
15	<i>Liassochrysa stigmatica</i> Ansonge & Schlüter	Crown Mantispidae	182	Ansonge & Schlüter (1990)
18	<i>Triassopsychops superbus</i> Tillyard	Stem Psychopsidae	205	Tillyard (1922)
19	<i>Cretapsychops decipiens</i> Peng <i>et al.</i>	Crown Psychopsidae	156	Peng <i>et al.</i> (2010)
20	<i>Liminymphe makarkini</i> Ren & Engel	Stem Nymphidae	156	Ren & Engel (2007)
21	<i>Daonymphes bisulca</i> Makarkin <i>et al.</i>	Crown Nymphidae	156	Makarkin <i>et al.</i> (2013)
22	<i>Guithone bethouxi</i> Zheng <i>et al.</i>	Crown Ithonidae	156	Zheng <i>et al.</i> (2016)
26	<i>Paralembochrysa splendida</i> Nel <i>et al.</i>	Crown Chrysopidae	125.5	Nel <i>et al.</i> (2005)
28	<i>Pseudochrysa harveyi</i> Makarkin & Archibald	Crown Nothochrysininae	48.6	Makarkin & Archibald (2013)
31	<i>Nothochrysa stampieni</i> Nel & Séméria	Crown <i>Nothochrysa</i>	23	Nel & Séméria (1986)
35	<i>Paleochrysa monteilsensis</i> Séméria & Nel	Crown Chrysopinae	34	Séméria & Nel (1990)
38	<i>Leucochrysa (nodita) prisca</i> Engel & Grimaldi	Crown <i>Leucochrysa</i>	13.7	Engel & Grimaldi (2007)
40	Belonopterygini larva	Crown Belonopterygini	34	Archibald <i>et al.</i> (2014)
99	<i>Chrysopa glaesaria</i> Engel & Grimaldi	Crown <i>Chrysopa</i>	13.7	Engel & Grimaldi (2007)



**Fig. 1.** Bayesian phylogeny of Chrysopidae based on anchored hybrid enrichment data. All nodes have a posterior probability support value of 1.0, except for those marked with an orange disc, which have support values between 0.95 and 0.99. [Colour figure can be viewed at [wileyonlinelibrary.com](http://wileyonlinelibrary.com)].

recovered as sister to the rest of Chrysopinae, diverging during the Late Cretaceous. The placement of this genus outside of the currently recognized tribes of Chrysopinae supports the establishment of a new tribe Nothancylini to accommodate it. The remaining Chrysopinae then diverged into two major clades during the early Paleogene (48 Ma) and relatively shortly after the Cretaceous–Tertiary (K–T) extinction event – one comprising the tribes Leucochrysinini and Belonopterygini and the other comprising the tribes Chrysopini and Ankylopterygini. The node subtending this cladogenesis had a significant change in sequence rate heterogeneity, as indicated by the BMM analysis (Fig. 2, inset; Figs S4, S5), suggesting a dramatic change in the rate of diversification. Subsequently, branch lengths throughout the rest of this entire clade were notably shorter, on average, than earlier ones in Chrysopini throughout Cenozoic, which is probably indicative of this rapid increase in diversification rate.

Leucochrysinini diverged from Belonopterygini during the Mid-Paleogene (41 Ma), with both tribes recovered here as reciprocally monophyletic. The New World genus *Vieira* was strongly supported as sister to the rest of Belonopterygini and not within Leucochrysinini. The other two New World genera, *Nacarina* Navás and *Abachrysa* Banks, also diverged during the Paleogene from Old World Belonopterygini genera. The monophyly of certain genera of Belonopterygini is questioned based on these results, with *Italochrysa* Principi rendered paraphyletic by *Stigmachrysa* Navás, *Evanochrysa* Brooks & Barnard and *Oyochrysa* Brooks.

The second major clade of Chrysopinae comprises Chrysopini rendered paraphyletic by Ankylopterygini. Within this clade is a distinct basal dichotomy, represented by one subclade comprising Ankylopterygini as the sister to a pair of Chrysopini genera, *Nineta* Navás and *Chrysopidia* Navás, while the other subclade contains the remaining Chrysopini genera. Ankylopterygini are recovered as monophyletic, with *Parankylopteryx* Tjeder as sister to the rest of the tribe, followed by one clade comprising *Signochrysa* Brooks & Barnard with a paraphyletic *Semachrysa* Brooks, and another clade comprising *Retipenna* as sister to *Ankylopteryx* Brauer.

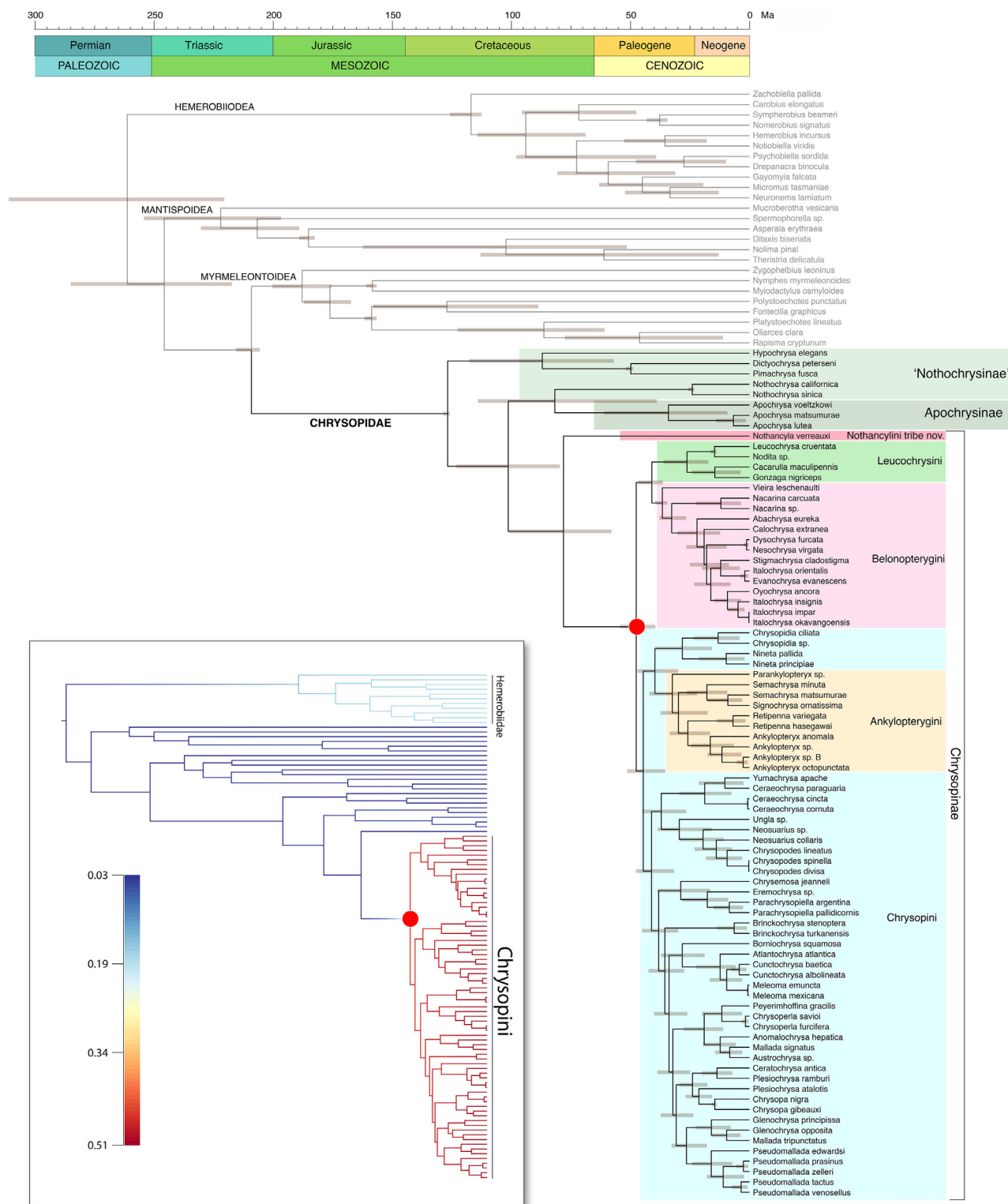
Within the remaining Chrysopini (*sans* *Nineta* and *Chrysopidia*), a group of exclusively New World genera – *Yumachrysa* Banks, *Ceraeochrysa* Adams, *Chrysopodes* Navás, *Ungla* Navás and *Neosuarius* Adams & Penny – was recovered as sister to the rest of the tribe. This was followed by a group of genera comprising *Chrysemosa* Brooks & Barnard, *Eremochrysa* Banks and *Parachrysoptera* Brooks & Barnard. Internodes in this part of the tree become increasingly shorter, but almost all retain high branch support values (Fig. 1), indicating a period of rapid diversification (Fig. 2). The topologies of the Bayesian and divergence-time analyses vary in this part of the tree, resulting in lower subjective confidence in relationships, regardless of branch support. Several groups of genera are notable, though, including one consisting of *Borniochrysa* Brooks & Barnard, *Atlantochrysa* Hölzel, *Meleoma* Fitch, and *Cunctochrysa* Hölzel, and another comprising *Chrysopa* Leach, *Ceratochrysa* Tjeder and *Plesiochrysa* Adams. The analysed species of the large genus *Pseudomallada* were recovered as monophyletic.

Diversification rate analyses in BMM (Rabosky, 2014) identified one shift in Chrysopidae, with a significant increase in evolutionary rate identified for non-nothancyline Chrysopinae (Fig. 2, inset). A second shift in rate was identified in Hemerobiidae, with an increase in evolutionary rates occurring either along the branch leading to the crown Hemerobiidae or within Hemerobiidae (the latter with low posterior probability; see Figs S4, S5). BMM also identified a scenario with three rate shifts, one in Hemerobiidae, another in Chrysopinae and a third in Apochrysininae, albeit with low probability. In all estimated scenarios, the evolutionary rates found in non-nothancyline Chrysopinae were significantly higher than in any other lineage.

## Discussion

### *Nothochrysininae and Apochrysininae*

The extant Chrysopidae have long been traditionally divided into three subfamilies – Nothochrysininae, Apochrysininae and Chrysopinae – whose relationships have been difficult to resolve conclusively. Based on traditional morphology, Nothochrysininae have usually been considered as sister to Apochrysininae + Chrysopinae (Tjeder, 1966; Adams, 1967; Brooks & Barnard, 1990; Brooks, 1997; Archibald *et al.*, 2014), but no quantitative analyses have recovered this topology with any strong statistical support. Instead, most quantitative analyses, especially those using molecular data, have recovered either Chrysopinae as sister to Apochrysininae + Nothochrysininae (i.e. Haruyama *et al.*, 2008; Duelli *et al.*, 2014; Jiang *et al.*, 2017) or Apochrysininae as sister to Nothochrysininae + Chrysopinae (i.e. Winterton & Freitas, 2006; Dai *et al.*, 2017; Garzón-Orduña *et al.*, 2019). Our analysis of anchored enrichment data recovered another alternative (Figs 1, 2). Nothochrysininae was rendered paraphyletic, with a clade comprising *Hypochrysa*, *Pimachrysa* and *Dictyochrysa* recovered as the sister group to the rest of Chrysopidae, diverging during the Early Cretaceous. Interestingly, the nominal genus *Nothochrysa* was recovered as sister to the rest of Nothochrysininae by Garzón-Orduña *et al.* (2019), whereas here it was recovered with strong support as sister to Apochrysininae. It is difficult to reconcile *Nothochrysa* as sister to Apochrysininae, because their respective morphologies are relatively disparate based on wing venation and genitalia, but the separation of *Nothochrysa* from the rest of the nothochrysinine genera is not surprising. Amongst the genera with larvae that are known, *Nothochrysa* is the only debris carrier (Tauber, 2014), and it has at least some similarities in wing venation with members of Chrysopinae and Apochrysininae that are absent from the other ‘nothochrysinine’ genera (Breitkreuz *et al.*, 2017). Although novel, this result is consistent with the observation that the subfamily Nothochrysininae contains a collection of rather heterogeneous genera that are unified only by the shared presence of a variety of plesiomorphic characters. Further study is required to fully elucidate this apparent nothochrysinine paraphyly. Moreover, Apochrysininae have been shown to share multiple adult and larval characteristics with Chrysopinae (Brooks & Barnard, 1990; Tauber, 2014; Tauber



**Fig. 2.** Chronogram of green lacewing divergence time estimates. Inset represents Phylorate plot showing net diversification rate based on the maximum clade credibility tree. Colours of branches indicate the mean evolutionary rate [relative rates from blue (slower) to red (faster)]. The red circle represents the shift in diversification rate. [Colour figure can be viewed at [wileyonlinelibrary.com](http://wileyonlinelibrary.com)].

*et al.*, 2014; Breitzkreuz *et al.*, 2017), quite distinct from *Nothochrysa*.

Here *Hypochrysa*, *Pimachrysa* and *Dictyochrysa* represent the clade that is sister to the rest of Chrysopidae. Within this clade, *Pimachrysa* and *Dictyochrysa* were recovered as more closely related to each other than to *Hypochrysa*. Earlier, based on adult genitalic and abdominal characters, and the ideas of Tjeder (1966), Brooks & Barnard (1990), and Brooks (1997), Tauber (2014) proposed two groups of genera within Nothochrysinae: now excluding *Nothochrysa*, one clade included *Asthenochrysa*, *Dictyochrysa*, *Hypochrysa* (= *Kimochrysa* Tjeder) and *Triplochrysa* Kimmins, and the second comprised the remaining genera, *Leptochrysa* Adams & Penny, *Pamochrysa* Tjeder and *Pimachrysa*. This proposal is not consistent with the results here, or with those from the study by Garzón-Orduña *et al.* (2019). The results of Garzón-Orduña *et al.* (2019) also do not support the synonymy of *Kimochrysa* with *Hypochrysa* as proposed by Tauber (2014) on the basis of larval similarities. Molecular data instead indicate close relationships amongst *Dictyochrysa*, *Pimachrysa* and *Kimochrysa*, as well as *Hypochrysa* with *Asthenochrysa*. Additional study will be needed to confirm or refute the nothochrysinine polyphyly recovered here.

### Chrysopinae

The majority of species richness of green lacewings resides in the subfamily Chrysopinae, with at least 1360 species placed in at least 68 genera worldwide. This subfamily has been long considered monophyletic based on both adult (e.g. Adams, 1967; Brooks & Barnard, 1990; Winterton & Freitas, 2006; Haruyama *et al.*, 2008; Duelli *et al.*, 2014; Dai *et al.*, 2017; Jiang *et al.*, 2017; Garzón-Orduña *et al.*, 2019) and weak larval characters (Tauber *et al.*, 2014). Our results provide further support for that monophyly and place the origin of the subfamily during the Mid-Cretaceous (Fig. 2; Table S2), which is later than the previous estimates by Garzón-Orduña *et al.* (2019) and Jiang *et al.* (2017). We recover the genus *Nothancylla* as sister to the rest of Chrysopinae, in agreement with several recent studies using DNA sequence data (Dai *et al.*, 2017; Jiang *et al.*, 2017; Garzón-Orduña *et al.*, 2019). Previous morphological studies had placed this monotypic genus in either Apochrysinae or Chrysopinae (Brooks & Barnard, 1990; Winterton, 1995; Winterton & Brooks, 2002), but a study using DNA sequence data placed the genus uneasily as sister to Nothochrysinae (Winterton & Freitas, 2006). Based on strong support for the placement of *Nothancylla* as sister to the rest of Chrysopinae, combined with its unique morphology, we propose the new tribe Nothancylini to accommodate the genus, a result anticipated by Brooks (1997) two decades ago. *Nothancylla* exhibits an intermediate form, with characteristics typical of both Apochrysinae and Chrysopinae, and its placement between these two subfamilies is generally supported on morphological grounds (Winterton & Brooks, 2002). Our decision to place Nothancylini as a new tribe within Chrysopinae instead of a separate subfamily is based largely on the shared presence of a forewing tympanum and similarities in genitalic morphology between *Nothancylla* and the rest of Chrysopinae.

Chrysopinae is subsequently divided into two major clades, diverging at the end of the Cretaceous to the Mid-Paleogene. One clade contains Belonopterygini sister to Leucochrysinini, and the other clade comprises a paraphyletic tribe Chrysopini with Ankylopterygini nested within. The relatively close proximity of the beginning of this radiation to the K–T boundary is an interesting temporal juxtaposition. It is possible that the current disproportionately species-rich fauna of non-nothancyline Chrysopinae may trace its ultimate cause to a dramatic increase in niche availability following the K–T boundary event, perhaps coupled with a genetic bottleneck in populations of the non-nothancyline chrysopine ancestor that survived the event. However, the 15–20 Ma time lag between the K–T event and the estimated age of the first post-K–T cladogenetic event of this lineage (Fig. 2, red dot) suggests restraint in overemphasizing any immediate and direct effect of the K–T event on the initiation of the subsequent chrysopine radiation, based on current knowledge. Neither of the other two chrysopid subfamilies (Nothochrysinae and Apochrysinae) exhibit a marked Paleogene radiation event, and instead, at least in the case of Nothochrysinae (with numerous fossils known), appear to have undergone a reduction in diversity at the end of the Cretaceous with no subsequent increase in diversification rate, ultimately resulting in the relatively lower species-richness of those subfamilies in the extant fauna.

### Belonopterygini and Leucochrysinini

The sister-group relationship between Belonopterygini and Leucochrysinini recovered here with strong support has been widely accepted previously based on genitalic characters (Brooks & Barnard, 1990; Brooks, 1997) and previous molecular data (Winterton & Freitas, 2006; Garzón-Orduña *et al.*, 2019). The close relationship here between *Gonzaga* and *Cacarulla* Navás was also recovered by Garzón-Orduña *et al.* (2019), in a clade sister to the species-rich genera *Leucochrysa* McLachlan and *Nodita* Navás (sometimes considered subgenera). Tauber (2007) previously transferred *Vieira* from Leucochrysinini to Belonopterygini based on both adult and larval characters which was supported by Garzón-Orduña *et al.* (2019) and in this analysis. As with Garzón-Orduña *et al.* (2019), we too recovered *Vieira* as the sister to the remainder of Belonopterygini, followed by the New World genera *Nacarina* and *Abachrysa*. Old World Belonopterygini genera are again recovered as more derived, with the Australian genus *Calochrysa* Banks sister to the remainder. With the larger sampling of genera here compared with Garzón-Orduña *et al.* (2019), we recovered *Italochrysa* rendered paraphyletic by *Stigmachrysa*, *Oyochrysa* and *Evanochrysa*, suggesting a possible future need to synonymize these very similar genera with *Italochrysa*. Brooks (1984) previously suggested a possible close relationship between *Oyochrysa* and *Italochrysa*. The Afrotropical genera *Nesochrysa* and *Dysochrysa* were recovered as sister taxa in a lineage separate from *Italochrysa* sensu lato. A more extensive phylogenetic review of all Belonopterygini genera is needed to more fully understand their interrelationships.



and to test whether or not the removal of various genera from *Italochrysa* renders the latter paraphyletic.

#### *Ankylopterygini and Chrysopini*

The greatest species richness in green lacewings is contained in the tribe Chrysopini. However, similar to results by Garzón-Orduña *et al.* (2019), our quantitative analyses recover the tribe rendered paraphyletic by Ankylopterygini. The status and placement of Ankylopterygini have been problematic in previous studies; it was unplaced by Brooks & Barnard (1990) and Haruyama *et al.* (2008), and as sister to Leucochrysinini by Winterton & Freitas (2006). More recently, some authors have identified a close relationship between Ankylopterygini and a small group of distinctive Chrysopini genera, i.e. *Nineta*, *Tumeochrysa* Needham and *Chrysopidia* (Duelli *et al.*, 2014; Mochizuki *et al.*, 2017; Garzón-Orduña *et al.*, 2019). Consistent with that hypothesis, we recover *Nineta* + *Chrysopidia* as sister to Ankylopterygini. A close relationship between Ankylopterygini, *Nineta*, *Tumeochrysa*, and *Chrysopidia* is also supported by their derived symmetrical adult mandibles (most chrysopids exhibit plesiomorphic asymmetrical mandibles). Brooks (1983) also noted this similarity, but did not accord it phylogenetic significance. Morphological characters that support the monophyly of a clade comprising *Nineta*, *Tumeochrysa*, and *Chrysopidia* include an elongated male sternite 9, the presence and unique form of the gonocornua, and proliferation of gradate crossveins in the wings; these gradate crossveins are typically in three rows in *Tumeochrysa* and *Chrysopidia* (Brooks & Barnard, 1990; Brooks, 1997).

Within Ankylopterygini, we recovered slightly different intergeneric relationships compared with those by Garzón-Orduña *et al.* (2019), including *Parankylopteryx* as sister to the rest of the tribe instead of sister to *Retipenna*. Brooks (1983) and Breitzkreuz *et al.* (2015) had previously considered the close relationship between *Ankylopteryx* and *Sencera* Navás (as subgenera of *Ankylopteryx*) and a more distant relationship to *Parankylopteryx* as a distinct genus – a result that is confirmed here. The sister-group relationship recovered here between *Semachrysa* and *Signochrysa* was similarly recovered by Garzón-Orduña *et al.* (2019), but this pair was placed in a more basal position instead of sister to *Ankylopteryx*. Our result instead supported *Retipenna* as sister to *Ankylopteryx*.

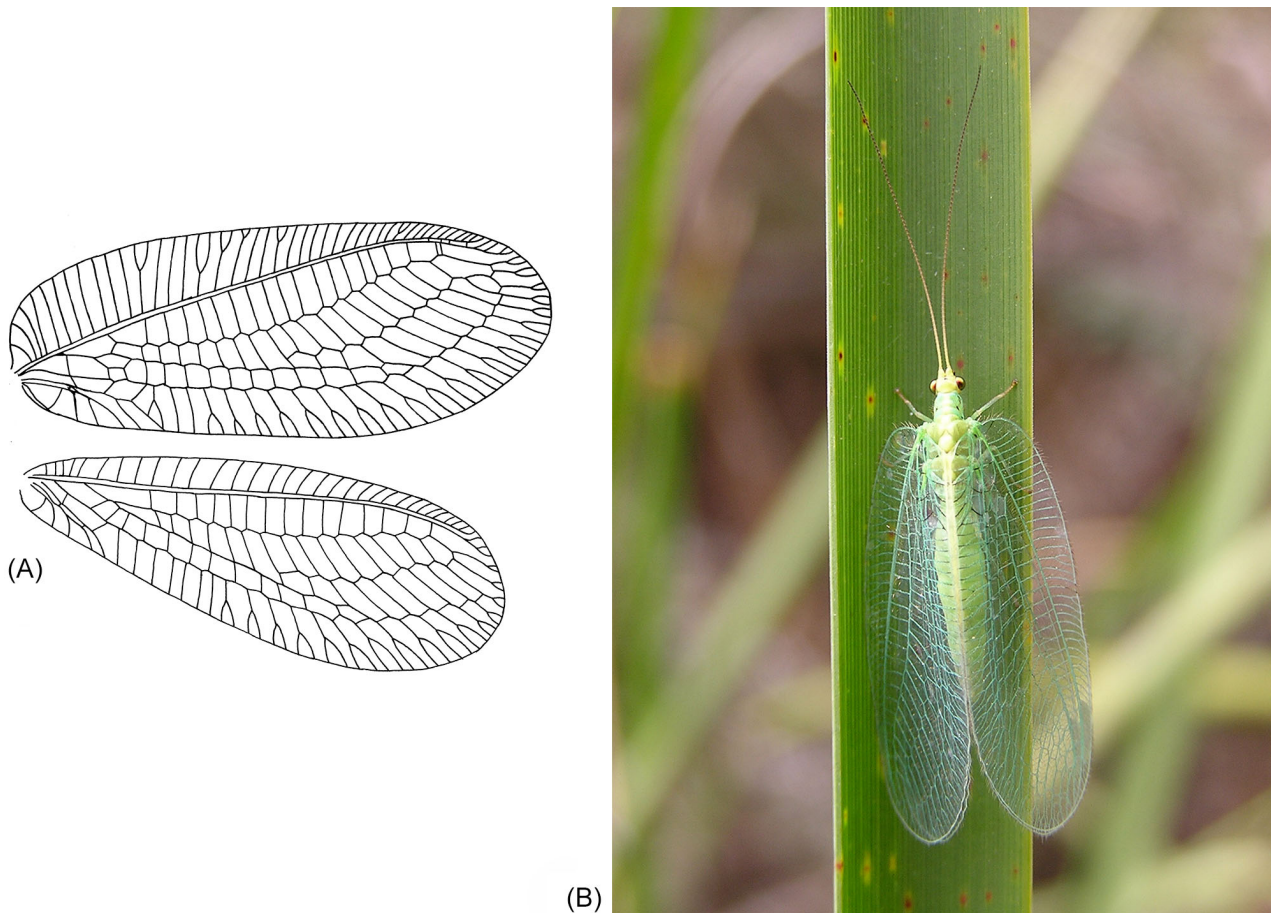
The largest portion of Chrysopini comprises the remaining genera arranged in a series of smaller groups of genera in clades that are strongly supported, but with shorter branch lengths. Divergence dating for this part of the tree is slightly younger than that estimated by Garzón-Orduña *et al.* (2019), but is well within the expected range in the Paleogene. The first clade to diverge is a collection of New World genera comprising *Yumachrysa*, *Ceraeochrysa* (paraphyletic without *Yumachrysa*), *Ungla*, *Chrysopodes* and *Neosuarius* (paraphyletic without *Chrysopodes*), similar to the results of Garzón-Orduña *et al.* (2019) and others (e.g. Brooks & Barnard, 1990; Tauber, 2010; Mochizuki *et al.*, 2017). Brooks & Barnard (1990) treated *Neosuarius* as a subgenus of *Chrysopodes*, but the paraphyly of

*Neosuarius* recovered here suggests that the current subgeneric divisions of *Chrysopodes* may be artificial. The placement of *Yumachrysa* in *Ceraeochrysa* is unusual here, and requires further investigation of members of both genera to confirm this placement, especially *C. paraguayaria*.

The next clade comprises a collection of similar-looking, physically diminutive genera, namely *Suarius* Navás, *Eremochrysa*, *Parachrysopiella* and *Chrysemosa*. Although we did not include *Suarius* in our analysis (cf. Garzón-Orduña *et al.*, 2019), we recovered *Chrysemosa* as sister to *Eremochrysa* and *Parachrysopiella*. Garzón-Orduña *et al.* (2019) also tentatively recovered the enigmatic genus *Kostka* as part of this clade, but it was not available for our analysis and we could not confirm this placement; Brooks (1997) suggested that *Kostka* may be more closely related to *Ungla*.

The widely distributed Old World genus *Brinckochrysa* is recovered next, as a monogeneric lineage. Garzón-Orduña *et al.* (2019) placed *Brinckochrysa* with *Glenochrysa*, but with weak support. *Brinckochrysa* species are diminutive lacewings and some authors have suggested that the genus is closely related to other genera with male courtship songs, such as *Chrysoperla*, *Eremochrysa* and *Peyerimhoffina* (Brooks, 1987; Brooks & Barnard, 1990). Based on current results, neither *Eremochrysa* nor *Brinckochrysa* group together with *Chrysoperla* and/or *Peyerimhoffina*, suggesting the male courtship songs and male stridulatory structures have evolved independently multiple times in chrysopids. Another genus that possesses male stridulatory structures is *Meleoma*. This genus has been previously associated with *Borniochrysa*, *Nipponochrysa* Tsukaguchi, *Atlantochrysa* and *Cunctochrysa* (Brooks & Barnard, 1990); our results support this grouping and is similar to the phylogenetic results of Duelli *et al.* (2014) and Garzón-Orduña *et al.* (2019). In contrast to Garzón-Orduña *et al.* (2019), though, we did not recover *Glenochrysa* close to these genera.

The remaining genera of Chrysopidae sampled here, with few exceptions, are those principally included in the *Mallada* and *Chrysopa* genus groups (sensu Brooks, 1997), whose relationships have been difficult to elucidate in all previous large-scale quantitative studies using DNA sequence data (i.e. Winterton & Freitas, 2006; Haruyama *et al.*, 2008; Duelli *et al.*, 2014; Garzón-Orduña *et al.*, 2019). Most branches in this clade are strongly supported, even though their branch lengths are relatively very short. The close relationship amongst the genera *Chrysoperla*, *Peyerimhoffina*, *Mallada* and *Anomalochrysa*, as found (at least in part) by previous authors (e.g. Brooks & Barnard, 1990; Brooks, 1994, 1997; Haruyama *et al.*, 2008; Duelli *et al.*, 2014; Mochizuki *et al.*, 2017; Garzón-Orduña *et al.*, 2019), is again recovered here and is supported by a series of male genitalic characters. The inclusion of *Austrochrysa* Esben-Petersen in this clade as sister to *Mallada* is novel, although Esben-Petersen (1928) previously suggested a close relationship between *Austrochrysa* and *Anomalochrysa*. The sister-group relationship between *Chrysoperla* and *Peyerimhoffina* is again well supported, and in contrast to Garzón-Orduña *et al.* (2019) and Mochizuki *et al.* (2017) we recovered *Chrysoperla* and *Peyerimhoffina* as reciprocally monophyletic. The close relationship between these two genera



**Fig. 3.** *Nothancyla verreauxi* Navás. (A) Wings; (B) living adult (photo © Kristy Ellington). [Colour figure can be viewed at [wileyonlinelibrary.com](http://wileyonlinelibrary.com)].

and the possible paraphyly of *Chrysoperla* by *Peyerimhoffina* deserves additional scrutiny using an expanded taxa sampling to confirm the status of *Peyerimhoffina* as a distinct genus.

The close relationship between *Chrysopa* and *Plesiochrysa* is well supported here, which accords well with their placement as subgenera by some authors based on adult and larval morphology (Adams, 1982; Brooks & Barnard, 1990; Penny, 2002). Previous molecular studies also have recovered a strong sister-group relationship between the two, regardless of status (Winterton & Freitas, 2006; Haruyama *et al.*, 2008; Duelli *et al.*, 2014; Garzón-Orduña *et al.*, 2019). *Ceratochrysa* has been treated as a subgenus of *Chrysopa* (Tjeder, 1966), or as a separate genus (Brooks & Barnard, 1990). Similar to Mochizuki *et al.* (2017), our analyses recover a paraphyletic *Plesiochrysa* relative to both *Ceratochrysa* and *Chrysopa*, and suggests a possible synonymy of the two smaller genera with *Chrysopa*. More study is needed for this group of genera, with greater taxon sampling, to further assess the status of these three genera relative to each other.

Our phylogeny grouped *Glenochrysa* with *Pseudomallada* and a species of *Mallada* [i.e. *Mallada tripunctatus* (McLachlan)]. The placement of *M. tripunctatus* rendering *Glenochrysa* paraphyletic is surprising, considering that

*M. tripunctatus* exhibits none of the typical characteristics of *Glenochrysa* (e.g. wing markings, male genitalic gonocristae and prothoracic eversible glandular sac). Although *M. tripunctatus* is not typical of many species of *Mallada*, placement in *Glenochrysa* would not be supported on the basis of morphology. The sister-group relationship of *Glenochrysa* and *Pseudomallada* was also recovered by Mochizuki *et al.* (2017). Various authors have displayed the polyphyletic nature of the heterogeneous genus *Apertochrysa* (e.g. Duelli *et al.*, 2017; Mochizuki *et al.*, 2017; Garzón-Orduña *et al.*, 2019), providing support for the transfer of multiple species previously contained within that genus to other genera, such as *Cunctochrysa* and *Pseudomallada*. In this case, we recover *Apertochrysa edwardsi* (Banks) in *Pseudomallada*.

#### Taxonomy

##### Nothancylini **tribe n.**

Type genus: *Nothancyla* Navás, 1910: 51.

**Diagnosis.** Antennal flagellomeres with five annular rows of setae; wings broad, ovoid; forewing costal area broad

basally, basal sc-r crossveins absent; intramedial cell present, quadrangular; tympanum present in forewing; pseudomedial vein continuous with outer gradates series; mandibles broad, not scythe-like; male genitalia with ectoproct elongate, narrowed posteriorly; gonarcus reduced in size, gonocornua absent; parameres (=gonapsis) and tignum absent; female genitalia lacking praegenitale.

*Included genera.* *Nothancyla* Navás (Fig. 3).

*Comments.* Nothancylini is placed in the subfamily Chrysopinae based on the presence of a forewing tympanum, a synapomorphy of the subfamily (Breitkreuz *et al.*, 2017). The tribe contains only the monobasic genus *Nothancyla* (type species: *Nothancyla verreauxi* Navás, 1910), which has a Bassian (south temperate) distribution in southern Australia.

## Conclusions

Using anchored hybrid enrichment phylogenomic data, we recovered a strongly supported phylogeny of the family Chrysopidae that is closely congruent with other recently published molecular phylogenies, particularly those of Mochizuki *et al.* (2017) and Garzón-Orduña *et al.* (2019). The consensus that is emerging from these works is increasing our confidence that we are making substantial progress towards a better understanding of the deep phylogenetic relationships among green lacewings, knowledge that is a prerequisite for developing a robust, phylogenetically based, classification for the family that can serve as a general reference scheme for the group. The current results suggest that additional phylogenetic focus is needed on nothochrysin genera, particularly those that have not yet been included in molecular phylogenetic analyses, in order to more confidently resolve basal relationships within the family. But monophyly of the dominant radiation of green lacewings, the Chrysopinae, was strongly supported, and the erection of a new basal chrysopine tribe, the Nothancylini, together with strong support for the monophyly of several pre-existing chrysopine tribes (Leucochrysinini, Belonopterygini and Ankylopterygini) and the identification of several new monophyletic groupings of genera, provides a solid phylogenetic basis from which to begin reconsideration of the higher taxonomy of the non-nothancylinae Chrysopinae.

## Supporting Information

Additional supporting information may be found online in the Supporting Information section at the end of the article.

**File S1.** Chrysopidae Anchored hybrid enrichment alignment.

**File S2.** Chrysopidae anchored hybrid enrichment, partition datasets.

**Table S1.** Taxa used in this study, including SRA accession numbers.

**Table S2.** Divergence time estimates (mean ages and ranges) and branch support values for nodes in Figs 2 and S1. PP, posterior probability.

**Figure S1.** Chronogram node numbers and fossils.

**Figure S2.** Maximum likelihood phylogeny of Chrysopidae using AHE data. Bootstrap support values are indicated on nodes and grouped by colour according to value.

**Figure S3.** Nucleotide Astral tree.

**Figure S4.** BAMM plot showing the two most common shift configurations in the credible set. The ‘f’ number corresponds to the proportion of the posterior samples in which this configuration is present.

**Figure S5.** Macroevolutionary cohort matrix for diversification. Each cell in the matrix is coded by a colour denoting the pairwise probability that two species share a common macroevolutionary rate regime. The maximum clade credibility tree is shown for reference in the left and upper margins of each cohort matrix.

**Figure S6.** BAMM rate shift tree showing the overall best fit configuration. Red circles signify placement of shifts.

## Acknowledgements

We would like to acknowledge here our special debt to and respect for our former colleagues Norman ‘Norm’ Penny and Atsushi Mochizuki. Norm and Atsushi both made tremendous contributions to the taxonomy and phylogeny of Chrysopidae, not only through their contributions published in many important scientific papers, but also through their many generous collaborations over the years. While both contributed much to this study in the form of specimens, sequencing methods, and taxonomic expertise, unfortunately neither lived to see the final publication of its results, ‘the tree’, in which both would have been deeply interested. This research was supported by the following funding agencies: Brazilian National Council for Scientific and Technological Development (209447/2013–3, to JPG), the US National Science Foundation (DEB-1144119, to SLW; DEB-1144162, to MSE; and DEB-0933588, to JDO) and the Beijing Natural Science Foundation (5162016) (to XL). The authors declare that there are no conflicts of interest.

## References

- Aberer, A.J., Kobert, K. & Stamatakis, A. (2014) ExaBayes: massively parallel Bayesian tree inference for the whole-genome era. *Molecular Biology and Evolution*, **31**, 2553–2556.
- Adams, P.A. (1967) A review of the Mesochrysininae and Nothochrysininae (Neuroptera: Chrysopidae). *Bulletin of the Museum of Comparative Zoology at Harvard College*, **135**, 215–238.
- Adams, P.A. (1982) *Plesiochrysa*, a new subgenus of *Chrysopa* (Neuroptera) (Studies in New World Chrysopidae, Part I). *Neuroptera International*, **2**, 27–32.

- Ansorge, J. & Schlüter, T. (1990) The earliest chrysopterid: *Liassochrysa stigmatica* n. g., n. sp. from the Lower Jurassic of Dobbertin, Germany. *Neuroptera International*, **6**, 87–93.
- Archibald, S.B., Makarkin, V.N., Greenwood, D.R. & Gunnel, G.F. (2014) The red queen and court jester in green lacewing evolution: bat predation and global climate change. *PALAIOS*, **29**, 185–191.
- Bakkes, D., Mansell, M.W. & Sole, C.L. (2018) Phylogeny and historical biogeography of silky lacewings (Neuroptera: Psychopsidae). *Systematic Entomology*, **43**, 43–55.
- Borowiec, M.L. (2016) AMAS: a fast tool for alignment manipulation and computing of summary statistics. *PeerJ*, **4**, e1660.
- Bouckaert, R., Heled, J., Kühnert, D. *et al.* (2014) BEAST 2: a software platform for Bayesian evolutionary analysis. *PLoS Computational Biology*, **10**, e1003537.
- Breitkreuz, L.C.V., Winterton, S.L. & Engel, M.S. (2015) Revision of the green lacewing subgenus *Ankylopteryx* (*Sencera*) (Neuroptera: Chrysopidae). *Zookeys*, **543**, 111–127.
- Breitkreuz, L.C.V., Winterton, S.L. & Engel, M.S. (2017) Wing Tracheation in Chrysopidae and Other Neuropterida (Insecta): a resolution of the confusion about vein fusion. *American Museum Novitates*, **3890**, 1–44.
- Brooks, S.J. (1983) A new genus of Oriental lacewings (Neuroptera: Chrysopidae). *Bulletin of the British Museum of Natural History (Entomology)*, **47**, 1–26.
- Brooks, S.J. (1984) A redefinition of the Italo-chrysinini (Chrysopidae) with the description of a new genus from Nigeria. *Neuroptera International*, **3**, 79–88.
- Brooks, S.J. (1987) Stridulatory structures in three green lacewings (Neuroptera: Chrysopidae). *International Journal of Insect Morphology and Embryology*, **16**, 237–244.
- Brooks, S.J. (1994) A taxonomic review of the common green lacewing genus *Chrysoperla* (Neuroptera: Chrysopidae). *Bulletin of the British Museum of Natural History (Entomology)*, **63**, 137–210.
- Brooks, S.J. (1997) An overview of the current status of Chrysopidae (Neuroptera) systematics. *Deutsche Entomologische Zeitschrift*, **44**, 267–275.
- Brooks, S.J. & Barnard, P.C. (1990) The green lacewings of the world: a generic review (Neuroptera: Chrysopidae). *Bulletin of the British Museum of Natural History (Entomology)*, **59**, 117–286.
- Dai, Y., Winterton, S.L., Garzón-Orduña, I.J., Liang, F. & Liu, X. (2017) Mitochondrial phylogenomic analysis resolves the subfamily placement of enigmatic green lacewing genus *Nothancyla* (Neuroptera: Chrysopidae). *Austral Entomology*, **56**, 322–331.
- Drummond, A.J. & Bouckaert, R.R. (2015) *Bayesian Evolutionary Analysis with BEAST*. Cambridge University Press, Cambridge, U.K.
- Drummond, A.J., Ho, S.Y.W., Phillips, M.J. & Rambaut, A. (2006) Relaxed phylogenetics and dating with confidence. *PLoS Biology*, **4**, e88.
- Duelli, P., Henry, C.S. & Mochizuki, A. (2014) The endemic *Atlantochrysa atlantica* (McLachlan) (Neuroptera: Chrysopidae) on Atlantic Islands: African or American origin? *Journal of Natural History*, **48**, 2595–2608.
- Duelli, P., Henry, C.S., Hayashi, M., Nomura, N. & Mochizuki, A. (2017) Molecular phylogeny and morphology of *Pseudomal-lada* (Neuroptera: Chrysopidae), one of the largest genera within Chrysopidae. *Zoological Journal of the Linnean Society*, **180**, 556–569.
- Engel, M.S. & Grimaldi, D.A. (2007) The neuropterid fauna of Dominican and Mexican amber (Neuropterida: Megaloptera, Neuroptera). *American Museum Novitates*, **3587**, 1–58.
- Engel, M.S., Winterton, S.L. & Breitkreuz, L.C.V. (2018) Phylogeny and evolution of Neuropterida: where have wings of lace taken us? *Annual Review of Entomology*, **63**, 531–551.
- Esben-Petersen, P. (1928) Neuroptera. *Insects of Samoa and other Samoan Terrestrial Arthropoda*. Fasc. 3, Part VII, pp. 89–108. British Museum of Natural History, London.
- Garzón-Orduña, I.J., Menchaca-Armenta, I.M., Contreras-Ramos, A., Liu, X. & Winterton, S.L. (2016) The phylogeny of brown lacewings (Neuroptera: Hemerobiidae) reveals multiple reductions in wing venation. *BMC Evolutionary Biology*, **16**, 192.
- Garzón-Orduña, I.J., Winterton, S.L., Jiang, Y. *et al.* (2019) The evolution of green lacewings (Neuroptera: Chrysopidae): a molecular supermatrix approach. *Systematic Entomology* in press.
- Gillung, J.P., Winterton, S.L., Bayless, K.M. *et al.* (2018) Anchored phylogenomics unravels the evolution of spider flies (Acroceridae) and reveals discordance between nucleotides and amino acids. *Molecular Phylogenetics & Evolution*, **128**, 233–245.
- Haruyama, N., Mochizuki, A., Duelli, P., Naka, H. & Nomura, M. (2008) Green lacewing phylogeny, based on three nuclear genes (Chrysopidae, Neuroptera). *Systematic Entomology*, **33**, 275–288.
- Jiang, Y., Garzón-Orduña, I.J., Winterton, S.L., Yang, F. & Liu, X. (2017) Phylogenetic relationships among tribes of the green lacewing family Chrysopinae recovered based on mitochondrial phylogenomics. *Scientific Reports*, **7**, 7218.
- Katoh, K. & Standley, D.M. (2013) MAFFT multiple sequence alignment software version 7: improvements in performance and usability. *Molecular Biology and Evolution*, **30**, 772–780.
- Lanfear, R., Calcott, B., Kainer, D., Mayer, C. & Stamatakis, A. (2014) Selecting optimal partitioning schemes for phylogenomic datasets. *BMC Evolutionary Biology*, **14**, 82.
- Lanfear, R., Frandsen, P.B., Wright, A.M., Senfeld, T. & Calcott, B. (2016) PartitionFinder 2: new methods for selecting partitioned models of evolution for molecular and morphological phylogenetic analyses. *Molecular Biology and Evolution*, **34**, 772–773.
- Lemmon, A.R., Emme, S.A. & Moriarty Lemmon, E. (2012) Anchored hybrid enrichment for massively high-throughput phylogenetics. *Systematic Biology*, **61**, 721–744.
- Liu, X., Winterton, S.L., Wu, C., Piper, R. & Ohl, M. (2015) A new genus of mantidflies discovered in China, with a higher-level phylogeny of Mantispidae (Neuroptera) using DNA sequences and morphology. *Systematic Entomology*, **40**, 183–206.
- Liu, X., Zhang, W., Winterton, S.L., Breitkreuz, L.C.V. & Engel, M.S. (2016) Early morphological specialization for insect-spider associations in Mesozoic lacewings. *Current Biology*, **26**, 1590–1594.
- Liu, X., Shi, G., Xia, F., Lu, X., Wang, B. & Engel, M.S. (2018) Liverwort mimesis in a Cretaceous lacewing larva. *Current Biology*, **28**, 1475–1481.
- Machado, R.J.P., Gillung, J.P., Winterton, S.L., Garzón-Orduña, I.J., Lemmon, A.R., Moriarty Lemmon, E. & Oswald, J.D. (2019) Owlflies are derived antlions: anchored phylogenomics and a revised phylogenetic classification of the family Myrmeleontidae (Insecta: Neuroptera). *Systematic Entomology*.
- Makarkin, V.N. & Archibald, S.B. (2013) A diverse new assemblage of green lacewings (Insecta, Neuroptera, Chrysopidae) from the early Eocene Okanagan Highlands, western North America. *Journal of Paleontology*, **87**, 123–146.
- Makarkin, V.N. & Wedmann, S. (2009) First record of the genus *Symphorobius* (Neuroptera: Hemerobiidae) from Baltic amber. *Zootaxa*, **2078**, 55–62.
- Makarkin, V.N., Yang, Q., Shi, C.F. & Ren, D. (2013) The presence of the recurrent veinlet in the Middle Jurassic Nymphidae (Neuroptera): a unique character condition in Myrmeleontoidea. *ZooKeys*, **325**, 1–20.
- Mochizuki, A., Henry, C.S. & Duelli, P. (2017) *Apertochrysa* (Neuroptera: Chrysopidae): a heterogeneric problem? *Zootaxa*, **4238**, 58–72.

- Navás, L. (1910) Crisópidos (Ins. Neur.) nuevos. *Broteria (Zoológica)*, **9**, 38–59.
- Nel, A. & Séméria, Y. (1986) Une nouvelle espèce de chrysopide fossile du Stampien supérieur (Oligocène) d'Aix-en-Provence *Notochrysa stampieni* n. sp. (Neuroptera, Chrysopidae, Notochrysinæ). *Neuroptera International*, **4**, 23–30.
- Nel, A., Delclos, X. & Hutin, A. (2005) Mesozoic chrysopid-like Planipennia: a phylogenetic approach (Insecta: Neuroptera). *Annales de la Société Entomologique de France*, **41**, 29–69.
- Oswald, J.D. (1999) The brown lacewing genus *Notiobiella* (Neuroptera: Hemerobiidae) from Dominican amber. *Journal of the New York Entomological Society*, **107**, 297–303.
- Oswald, J.D. (2018) *Neuropterida Species of the World*. Version 6.0. [WWW document]. URL <http://lacewing.tamu.edu/SpeciesCatalog/Main> [accessed on 15 July 2018].
- Peng, Y.Y., Makarkin, V.N., Yang, Q. & Ren, D. (2010) A new silky lacewing (Neuroptera: Psychopsidae) from the Middle Jurassic of Inner Mongolia, China. *Zootaxa*, **2663**, 59–67.
- Penny, N.D. (2002) Family Chrysopidae. *A Guide to the Lacewings (Neuroptera) of Costa Rica, Proceedings of the California Academy of Sciences*, Vol. **53** (ed. by N.D. Penny), pp. 187–227. 301–373. Publisher is California Academy of Sciences, San Francisco, California.
- Pérez-de la Fuente, R., Delclòs, X., Peñalver, E., Speranza, M., Wierzchos, J., Ascaso, C. & Engel, M.S. (2012) Early evolution and ecology of camouflage in insects. *Proceedings of the National Academy of Sciences of the United States of America*, **109**, 21414–21419.
- Plummer, M., Best, N., Cowles, K. & Vines, K. (2006) Coda: convergence diagnosis and output analysis for mcmc. *R News*, **6**, 7–11.
- Prum, R.O., Berv, J.S., Dornburg, A., Field, D.J., Townsend, J.P., Lemmon, E.C. & Lemmon, A.R. (2015) A fully resolved, comprehensive phylogeny of birds (Aves) using targeted next generation DNA sequencing. *Nature*, **526**, 569–573.
- Rabosky, D.L. (2014) Automatic detection of key innovations, rate shifts, and diversity-dependence on phylogenetic trees. *PLoS One*, **9**, e89543.
- Rabosky, D.L., Grudler, M., Anderson, C. et al. (2014) BAMMtools: an R package for the analysis of evolutionary dynamics on phylogenetic trees. *Methods in Ecology and Evolution*, **5**, 701–707.
- Rambaut, A., Suchard, M.A., Xie, D. et al. (2014) *Tracer v1.6*. [WWW document]. URL <http://beast.bio.ed.ac.uk/Tracer> [accessed on 25 July 2017].
- Ren, D. & Engel, M.S. (2007) A split-footed lacewing and two episomylines from the Jurassic of China (Neuroptera). *Annales Zoologici*, **57**, 211–219.
- Séméria, Y. & Nel, A. (1990) *Paleochrysa monteilsensis* gen. et sp. nov., a new fossil of Chrysopidae from the Upper Eocene Formation of Monteils (France), with a review of known chrysopid fossils (Insecta: Neuroptera). *Advances in Neuropterology. Proceedings of the Third International Symposium on Neuropterology*, pp. 298. South African Department of Agricultural Development, Pretoria.
- Shi, C., Winterton, S.L. & Dong, R. (2015) Phylogeny of split-footed lacewings (Neuroptera, Nymphidae), with descriptions of new Cretaceous-aged fossil species from China. *Cladistics*, **31**, 455–490.
- Tauber, C.A. (2007) Review of *Berchmansus* and *Vieira* and description of two new species of Leucochrysa (Neuroptera: Chrysopidae). *Annals of the Entomological Society of America*, **100**, 110–138.
- Tauber, C.A. (2010) Revision of *Neosuarius*, a subgenus of *Chrysopodes* (Neuroptera, Chrysopidae). *Zookeys*, **44**, 1–104.
- Tauber, C.A. (2014) Nothochrysinæ (Neuroptera: Chrysopidae): new larval description and generic synonymy, with a consideration of generic relationships. *Psyche*, **2014**, 1–10 ID 839262.
- Tauber, C.A., Tauber, M.J. & Albuquerque, G.S. (2014) Debris-carrying in Larval Chrysopidae: unraveling its evolutionary history. *Annals of the Entomological Society of America*, **107**, 295–314.
- Tillyard, R.J. (1922) Mesozoic insects of Queensland. No. 9 Orthoptera, and additions to the Protorthoptera, Odonata, Hemiptera and Planipennia. *The Proceedings of the Linnean Society of New South Wales*, **47**, 447–470.
- Tjeder, B. (1966) Neuroptera-Planipennia. The Lace-wings of Southern Africa. 5. Family Chrysopidae. *South African Animal Life*, Vol. **12** (ed. by B. Hanström, P. Brinck and G. Rudebec), pp. 228–534. Swedish Natural Science Research Council, Stockholm.
- Wang, B., Xia, F., Engel, M.S. et al. (2016) Debris-carrying camouflage among diverse lineages of Cretaceous insects. *Science Advances*, **2**, e1501918.
- Wang, Y., Liu, X., Garzón-Orduña, I.J. et al. (2017) Mitochondrial phylogenomics illuminates the evolutionary history of Neuropterida. *Cladistics*, **33**, 617–636.
- Winterton, S.L. (1995) A new genus and species of Apochrysinæ (Neuroptera: Chrysopidae) from Australia, with a checklist of Australian Chrysopidae. *Australian Journal of Entomology*, **34**, 139–145.
- Winterton, S.L. (2003) Molecular phylogeny of Neuropterida with emphasis on the lacewings (Neuroptera). *Entomologische Abhandlungen*, **61**, 158–160.
- Winterton, S.L. & Brooks, S.J. (2002) Phylogeny of the Apochrysinæ green lacewings (Neuroptera: Chrysopidae: Apochrysinæ). *Annals of the Entomological Society of America*, **95**, 16–28.
- Winterton, S.L. & Freitas, S. (2006) Molecular phylogeny of the green lacewings (Neuroptera: Chrysopidae). *Australian Journal of Entomology*, **45**, 235–243.
- Winterton, S.L., Hardy, N.B. & Wiegmann, B.M. (2010) On wings of lace: phylogeny and Bayesian divergence times estimates of Neuropterida (Insecta) based on morphological and molecular data. *Systematic Entomology*, **35**, 349–378.
- Winterton, S.L., Zhao, J., Garzón-Orduña, I.J., Wang, Y. & Liu, Z. (2017) Phylogeny of lance lacewings (Neuroptera: Osmylidae). *Systematic Entomology*, **42**, 555–574.
- Winterton, S.L., Lemmon, A.R., Gillung, J.P. et al. (2018) Evolution of lacewings and allied orders using anchored phylogenomics (Neuroptera, Megaloptera, Raphidioptera). *Systematic Entomology*, **43**, 330–354.
- Yang, Q., Makarkin, V.N., Winterton, S.L., Khramov, A.V. & Ren, D. (2012) A remarkable new family of Jurassic insects (Neuroptera) with primitive wing venation and its phylogenetic position in Neuropterida. *PLoS One*, **7**, e44762.
- Zheng, B.Y., Ren, D. & Wang, Y.J. (2016) Earliest true moth lacewing from the Middle Jurassic of Inner Mongolia, China. *Acta Palaeontologica Polonica*, **61**, 847–851.

Accepted 3 January 2019

First published online 7 February 2019