

## CHRYSOPERLA CARNEA

### Synonyms :

*Chrysopa affinis*\* Stephens, 1829  
*Chrysopa affinis* Stephens, 1836  
*Chrysopa carnea* Stephens, 1836  
*Chrysopa incarnata* Brauer, 1851  
*Chrysopa microcephala* Brauer, 1851  
*Chrysopa perla* var. *incarnata* Brauer, 1851  
*Chrysopa perla* var. *primaveria* Brauer, 1851  
*Chrysopa perla* var. *rubropunctata* Brauer, 1851  
*Chrysopa primaveria* Brauer, 1851  
*Chrysopa rubropunctata* Brauer, 1851  
*Chrysopa vulgaris* Schneider, 1851  
*Chrysopa vulgaris* var. *carnea* Stephens, 1836  
*Hemerobius biseriatus*\* Schneider, 1851  
*Chrysopa vulgaris* var. *incarnata* Brauer, 1851  
*Chrysopa vulgaris* var. *primaveria* Brauer, 1851  
*Chrysopa vulgaris* var. *rubropunctata* Brauer, 1851  
*Chrysopa lamproptera* Stein, 1863  
*Chrysopa (Chrysopa) microcephala* Brauer, 1851  
*Chrysopa (Chrysopa) vulgaris* Schneider, 1851  
*Chrysopa (Chrysopa) carnea* Stephens, 1836  
*Chrysopa (Chrysopa) vulgaris* var. *biseriata*\* (Schneider, 1851)  
*Chrysopa (Chrysopa) vulgaris* var. *carnea* Stephens, 1836  
*Chrysopa vulgaris* var. *microcephala* Brauer, 1851  
*Chrysopa (Puræ\*) vulgaris* Schneider, 1851  
*Chrysopa (Puræ\*) vulgaris* var. *microcephala* Brauer, 1851  
*Chrysopa vulgaris* var. *radialis* Navás, 1904  
*Chrysopa vulgaris* var. *aequata* Navás, 1905  
*Chrysopa vulgaris* var. *rubricata* Navás, 1905  
*Chrysopa vulgaris* var. *vulgaris* Schneider, 1851  
*Chrysopa vulgaris* var. *barnolai* Navás, 1906  
*Chrysopa vulgaris* var. *lulliana* Navás, 1910  
*Chrysopa vulgaris* var. *namurcensis* Navás, 1910  
*Chrysopa vulgaris* var. *bella* Navás, 1911  
*Chrysopa vulgaris* var. *flavocephala* Lacroix, 1911  
*Chrysopa vulgaris* var. *viridella* Navás, 1911  
*Chrysopa vulgaris* var. *fulviceps* Pongrácz, 1912  
*Chrysopa vulgaris* var. *minor* Pongrácz, 1912  
*Chrysopa vulgaris* var. *notata* Pongrácz, 1912  
*Chrysopa vulgaris* var. *rufostigma* Pongrácz, 1912  
*Chrysopa vulgaris* var. *cingulata* Navás, 1912  
*Chrysopa vulgaris* var. *biseriata*\* (Schneider, 1851)  
*Chrysopa vulgaris* var. *lateralis* Navás, 1913  
*Chrysopa vulgaris* var. *nemorosa* Navás, 1913  
*Chrysopa vulgaris* var. *nigropilosa* Navás, 1913  
*Chrysopa vulgaris* var. *stigmalis* Navás, 1913  
*Chrysopa pillichii* Pongrácz, 1913  
*Chrysopa vulgaris* var. *mista* Navás, 1913  
*Chrysopa vulgaris* var. *praetexta* Lacroix, 1913  
*Chrysopa vulgaris* var. *africana* Navás, 1915  
*Chrysopa vulgaris* var. *doriana* Navás, 1915  
*Chrysopa vulgaris* var. *disticha* Navás, 1915  
*Chrysopa vulgaris* var. *thoracica* Navás, 1915

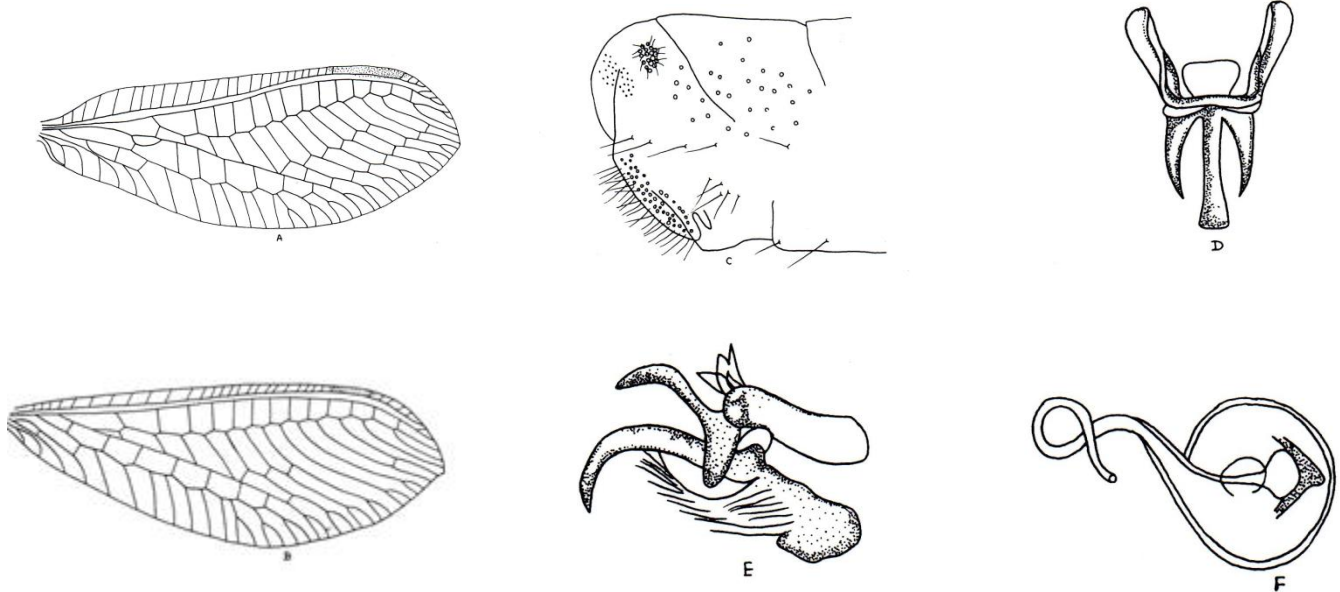
*Chrysopa vulgaris* var. *tristicta* Navás, 1915  
*Chrysopa (Puræ\*) lamproptera* Stein, 1863  
*Chrysopa (Puræ\*) vulgaris* var. *aequata* Navás, 1905  
*Chrysopa (Puræ\*) vulgaris* var. *aragonica* Navás, 1915  
*Chrysopa (Puræ\*) vulgaris* var. *barnolai* Navás, 1906  
*Chrysopa (Puræ\*) vulgaris* var. *bella* Navás, 1911  
*Chrysopa (Puræ\*) vulgaris* var. *bilineata* Navás, 1915  
*Chrysopa (Puræ\*) vulgaris* var. *biseriata\** (Schneider, 1851)  
*Chrysopa (Puræ\*) vulgaris* var. *buchi* Navás, 1915  
*Chrysopa (Puræ\*) vulgaris* var. *carnea* Stephens, 1836  
*Chrysopa (Puræ\*) vulgaris* var. *catalaunica* Navás, 1915  
*Chrysopa (Puræ\*) vulgaris* var. *cingulata* Navás, 1912  
*Chrysopa (Puræ\*) vulgaris* var. *disticha* Navás, 1915  
*Chrysopa (Puræ\*) vulgaris* var. *fulviceps* Pongrácz, 1912  
*Chrysopa (Puræ\*) vulgaris* var. *lateralis* Navás, 1913  
*Chrysopa (Puræ\*) vulgaris* var. *lulliana* Navás, 1910  
*Chrysopa (Puræ\*) vulgaris* var. *namurcensis* Navás, 1910  
*Chrysopa (Puræ\*) vulgaris* var. *nemorosa* Navás, 1913  
*Chrysopa (Puræ\*) vulgaris* var. *nigropilosa* Navás, 1913  
*Chrysopa (Puræ\*) vulgaris* var. *notata* Pongrácz, 1912  
*Chrysopa (Puræ\*) vulgaris* var. *ornata* Navás, 1915  
*Chrysopa (Puræ\*) vulgaris* var. *radialis* Navás, 1904  
*Chrysopa (Puræ\*) vulgaris* var. *rubricata* Navás, 1905  
*Chrysopa (Puræ\*) vulgaris* var. *rubropunctata* Brauer, 1851  
*Chrysopa (Puræ\*) vulgaris* var. *rufostigma* Pongrácz, 1912  
*Chrysopa (Puræ\*) vulgaris* var. *stigmalis* Navás, 1913  
*Chrysopa (Puræ\*) vulgaris* var. *thoracica* Navás, 1915  
*Chrysopa (Puræ\*) vulgaris* var. *tristicta* Navás, 1915  
*Chrysopa (Puræ\*) vulgaris* var. *viridella* Navás, 1911  
*Chrysopa perla incarnata* Brauer, 1851  
*Chrysopa perla primaveria* Brauer, 1851  
*Chrysopa perla rubropunctata* Brauer, 1851  
*Chrysopa vulgaris* aber. *infecta\** Lacroix, 1915  
*Chrysopa vulgaris microcephala* Brauer, 1851  
*Chrysopa vulgaris* var. *accipienda* Lacroix, 1915  
*Chrysopa vulgaris* var. *aragonica* Navás, 1915  
*Chrysopa vulgaris* var. *bilineata* Navás, 1915  
*Chrysopa vulgaris* var. *buchi* Navás, 1915  
*Chrysopa vulgaris* var. *catalaunica* Navás, 1915  
*Chrysopa vulgaris* var. *haematodes* Navás, 1915  
*Chrysopa vulgaris* var. *ornata* Navás, 1915  
*Chrysopa vulgaris* var. *vicina* Lacroix, 1915  
*Chrysopa vulgaris* var. *striolata* Navás, 1916  
*Chrysopa vulgaris* var. *entoneura* Navás, 1917  
*Chrysopa vulgaris* var. *gemella\** Navás, 1917  
*Chrysopa vulgaris* var. *gemella* Navás, 1918  
*Chrysopa vulgaris* var. *festiva* Navás, 1918  
*Chrysopa vulgaris* var. *inversa* Navás, 1918  
*Chrysopa vulgaris* var. *stigmata* Navás, 1918  
*Chrysopa proxima* Navás, 1918  
*Chrysopa vulgaris* var. *albidella* Navás, 1919  
*Chrysopa vulgaris* var. *moneri* Navás, 1919  
*Chrysopa vulgaris* var. *perezacostai* Navás, 1919  
*Chrysopa vulgaris* var. *seriata* Navás, 1919  
*Chrysopa vulgaris* var. *seroi* Navás, 1919  
*Chrysopa vulgaris* var. *apostata* Navás, 1919  
*Chrysopa vulgaris* var. *prothoracica* Navás, 1919  
*Chrysopa (Puræ\*) vulgaris* var. *albidella* Navás, 1919

*Chrysopa (Purae\*) vulgaris* var. *apostata* Navás, 1919  
*Chrysopa (Purae\*) vulgaris* var. *entoneura* Navás, 1917  
*Chrysopa (Purae\*) vulgaris* var. *festiva* Navás, 1918  
*Chrysopa (Purae\*) vulgaris* var. *gemella* Navás, 1918  
*Chrysopa (Purae\*) vulgaris* var. *haematodes* Navás, 1915  
*Chrysopa (Purae\*) vulgaris* var. *inversa* Navás, 1918  
*Chrysopa (Purae\*) vulgaris* var. *moneri* Navás, 1919  
*Chrysopa (Purae\*) vulgaris* var. *perezacostai* Navás, 1919  
*Chrysopa (Purae\*) vulgaris* var. *prothoracica* Navás, 1919  
*Chrysopa (Purae\*) vulgaris* var. *proxima* Navás, 1918  
*Chrysopa (Purae\*) vulgaris* var. *seriata* Navás, 1919  
*Chrysopa (Purae\*) vulgaris* var. *seroi* Navás, 1919  
*Chrysopa (Purae\*) vulgaris* var. *striolata* Navás, 1916  
*Chrysopa vulgaris* f. *gemella* Navás, 1918  
*Chrysopa vulgaris* f. *microcephala* Brauer, 1851  
*Chrysopa vulgaris* f. *radialis* Navás, 1904  
*Chrysopa vulgaris* f. *rubricata* Navás, 1905  
*Chrysopa vulgaris* var. *proxima* Navás, 1918  
*Chrysopa vulgaris* var. *cephalica* Navás, 1926  
*Chrysopa kolthoffi* var. *rubescens* Navás, 1927  
*Chrysopa vulgaris* var. *carneola\** Navás, 1929  
*Cintameva quettana* Navás, 1930  
*Chrysopa vulgaris* var. *vitellina* Navás, 1931  
*Cintameva angelnina* Navás, 1931  
*Chrysopa ferganica* Navás, 1933  
*Chrysopa pictavica* Lacroix, 1933  
*Chrysopa kolthoffi* var. *adaptata* Navás, 1934  
*Chrysopa carnea* var. *vulgaris* Schneider, 1851  
*Chrysopa canariensis* Tjeder, 1940  
*Chrysopa lundbladi* Tjeder, 1940  
*Chrysopa maderensis* Tjeder, 1940  
*Chrysopa shansiensis* Kuwayama, 1962  
*Chrysopa (carnea) carnea* Stephens, 1836  
*Chrysopa (Chrysoperla) carnea* Stephens, 1836  
*Chrysopa (Chrysoperla) carnea* var. *brachyzona\** Steinmann, 1964  
*Chrysopa (Chrysoperla) carnea* var. *quadrimaculata\** Steinmann, 1964  
*Chrysopa (Chrysoperla) carnea* var. *rhodostigma\** Steinmann, 1964  
*Chrysopa (Chrysoperla) carnea* var. *ruficapitata\** Steinmann, 1964  
*Chrysopa (Chrysoperla) carnea* var. *stenozona\** Steinmann, 1964  
*Chrysopa (Chrysoperla) carnea* var. *tetrastigma\** Steinmann, 1964  
*Chrysopa (Chrysoperla) carnea* var. *unipunctata\** Steinmann, 1964  
*Chrysopa carnea* var. *brachyzona\** Steinmann, 1964  
*Chrysopa carnea* var. *quadrimaculata\** Steinmann, 1964  
*Chrysopa carnea* var. *rhodostigma\** Steinmann, 1964  
*Chrysopa carnea* var. *ruficapitata\** Steinmann, 1964  
*Chrysopa carnea* var. *stenozona\** Steinmann, 1964  
*Chrysopa carnea* var. *tetrastigma\** Steinmann, 1964  
*Chrysopa carnea* var. *unipunctata\** Steinmann, 1964  
*Chrysopa (Chrysoperla) canariensis* Tjeder, 1940  
*Chrysopa (Chrysoperla) lundbladi* Tjeder, 1940  
*Chrysopa (Chrysoperla) maderensis* Tjeder, 1940  
*Chrysoperla carnea* (Stephens, 1836)  
*Chrysopa aspersa* var. *notata* Pongrácz, 1912  
*Chrysopa carnea* var. *adaptata* Navás, 1934  
*Chrysopa carnea* var. *minor* Pongrácz, 1912  
*Chrysopa thoracica* Navás, 1915  
*Anisochrysa (Chrysoperla) carnea* (Stephens, 1836)  
*Anisochrysa carnea* (Stephens, 1836)

*Chrysoperla carnea carnea* (Stephens, 1836)  
*Chrysoperla carnea nanceiensis* Séméria, 1980  
*Chrysopa vulgaris* var. *adagnata*\* Monserrat, 1985  
*Chrysopa quettana* (Navás, 1930)  
*Chrysoperla shansiensis* (Kuwayama, 1962)  
*Chrysoperla nipponensis adaptata* (Navás, 1934)  
*Chrysopa biseriata*\* (Schneider, 1851)  
*Chrysoperla affinis* (Stephens, 1836)  
*Chrysoperla (carnea) lulliana* (Navás, 1910)  
*Chrysoperla (carnea) carnea* (Stephens, 1836)  
*Chrysopa catalaunica* Navás, 1915  
*Chrysopa cephalica* Navás, 1926  
*Chrysopa cingulata* Navás, 1912  
*Chrysopa disticha* Navás, 1915  
*Chrysopa doriana* Navás, 1915  
*Chrysopa entoneura* Navás, 1917  
*Chrysopa festiva* Navás, 1918  
*Chrysopa fulviceps* Pongrácz, 1912  
*Chrysopa gemella*\* Navás, 1917  
*Chrysopa haematodes* Navás, 1915  
*Chrysopa inversa* Navás, 1918  
*Chrysopa lateralis* Navás, 1913  
*Chrysopa lulliana* Navás, 1910  
*Chrysopa minor* Pongrácz, 1912  
*Chrysopa mista* Navás, 1913  
*Chrysopa moneri* Navás, 1919  
*Chrysopa namurcensis* Navás, 1910  
*Chrysopa nemorosa* Navás, 1913  
*Chrysopa nigropilosa* Navás, 1913  
*Chrysopa notata* Pongrácz, 1912  
*Chrysopa ornata* Navás, 1915  
*Chrysopa perezacostai* Navás, 1919  
*Chrysopa praetexta* Lacroix, 1913  
*Chrysopa prothoracica* Navás, 1919  
*Chrysopa radialis* Navás, 1904  
*Chrysopa rubescens* Navás, 1927  
*Chrysopa rubricata* Navás, 1905  
*Chrysopa seriata* Navás, 1919  
*Chrysopa seroi* Navás, 1919  
*Chrysopa stigmatis* Navás, 1913  
*Chrysopa striolata* Navás, 1916  
*Chrysopa tristicta* Navás, 1915  
*Chrysopa vicina* Lacroix, 1915  
*Chrysopa viridella* Navás, 1911  
*Chrysopa vitellina* Navás, 1931  
*Chrysoperla nanceiensis* Séméria, 1980  
*Chrysoperla (Anisochrysa) carnea* (Stephens, 1836)  
*Chrysoperla lulliana* (Navás, 1910)  
*Chrysoperla vulgaris* (Schneider, 1851)  
*Chrysoperla vulgaris* var. *albidella* (Navás, 1919)  
*Chrysoperla vulgaris* var. *radialis* (Navás, 1904)

**DISTRIBUTION** :Cosmopolitan and prevalent in The Palearctic region.

**DIAGNOSTIC CHARACTERS (Taxonomic) :**



**Characters :** Medium lacewing; ground colour yellowish green.

**Head:** Pale yellowish green; vertex raised but flattened; orange suffusion on the gena and clypeus. Scape swollen, pale green, marked internally with orange brown; pedicel pale green; flagellum brownish.

**Thorax:** A whitish dorsal vitta present; clothed with short hairs, black on prothorax, pale on meso- and metathorax; anterior angles of pronotum rounded. Legs pale green; tarsi pale brown; claws brown.

**Fore wing (Fig A):** Elongate, oval, apex slightly subacute; membrane transparent; distinct pterostigma; venation pale green; costa straight for greater part; Sc and R wide apart; 21-22 costal veinlets; inner gradate meeting psm; im elongate, ovate; ends before r-m crossvein.

**Hind wing (Fig B):** Smaller than fore wing; pterostigma distinct.

**Abdomen (Fig C,D):** Yellowish; white mid-dorsal line.

**Genitalia ♂ (Fig.E):** Acrossus pointed; gonarcus with two lateral flaps .

**Measurements of one specimen:** ♂ : Length of fore wing 13.9 mm; length of hind wing 11.2 mm long.

**Material examined:** 2 ♂ 1♀ : Murshidabad 02. IV. 2018;

**Remarks:** The species is common and a well known aphid predator. The species has been used in biological control programme throughout the world. Stephens (1836) described this species under the genus *Chrysopa*. Steinmann (1964) shifted this species under the genus *Chrysoperla*, which is now accepted. Hence in the present study this species has been described under the genus *Chrysoperla*.